



QUALITY IS IN THE HEART

CHEZA MUSIC SCHOOL

OF WHAT WE DO

LESSON 2

Music Theory G3

Quiz: www.chezamusicsschool.co.ke/mtg3l2

Grade 3

CONTENTS

Rhythm 1

01

Pitch

03

02

Rhythm 2

04

Keys & Scales 1

Grade 3

CONTENTS

Keys & Scales 2 **05**

Tonic Triads **07**

06 **Intervals**

08 **Terms and Signs**

Terms & Signs for the day:

ben - well

prima, primo- first

sembre - always

simile - in the same way

subito - suddenly

02

Grade 3

Rhythm 2

SIMPLE AND COMPOUND TIME

GROUPING NOTES AND RESTS IN COMPOUND TIME

COMPOUND TIME: DUPLÉ, TRIPLE AND QUADRUPLE

Grade 3

Simple and compound time

In simple time, each beat divides into 2. A minim beat can be divided into 2 crotchets, crotchet beat into 2 quavers etc.

2 3 4
4 4 4

The



beat divides into



2 3 4
2 2 2

The



beat divides into



3
8

The



beat divides into



Grade 3

Compound Time Signatures

In compound time, each beat is a dotted note that divides into 3.

At grade 3, all the compound time signatures have a dotted-crotchet beat, which divides into 3 quavers.

The top number of the compound time signature shows how many quavers/micro-beats (shown by bottom number '8') there are in a bar.

Grade 3

The demisemiquaver

Number of beats

1

2

1

2

1

2

1

2



Type of beat



Grade 3

The demisemiquaver

Number of beats

1 2 3 1 2 3 1 2 3 1 2 3



Type of beat

Grade 3

The demisemiquaver

Number of beats 1 2 3 4 1 2 3 4 1 2 3 4



Type of beat



Notice that a dotted minim is equal to 2 dotted crotchet beats. Avoid using ties where not necessary.

Grade 3

Answer the questions below:

What is the time signature for 3 dotted-crotchets beats in a bar?

How many dotted-crotchet beats are there in $12/8$ time?

How many quavers are there in $9/8$ time?

How do you differentiate simple time signature from compound time?

What is the time signature for two dotted-crotchets beats in a bar?

How many dotted-crotchet beats are there in $6/8$ time?

Grade 3

What is the time signature of the melody below?



The time signature is 6/8. Two dotted-crotchets in each bar

Grade 3

What is the time signature of the melody below?



The time signature is 9/8. Three dotted-crotchets in each bar

Grade 3




What is the time signature of the melody below?



The time signature is 12/8. Four dotted-crotchets in each bar

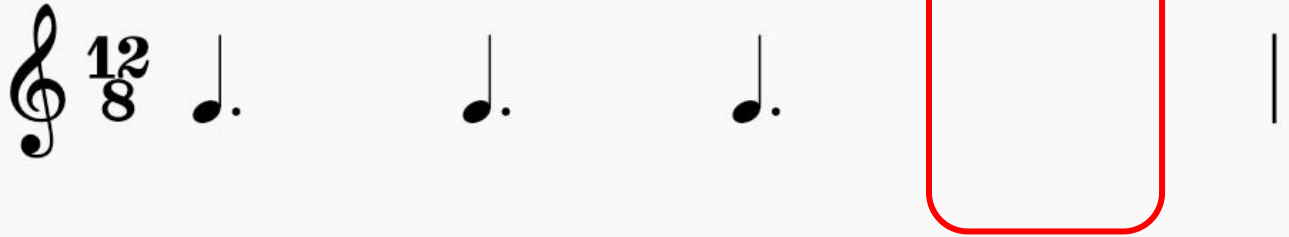
Grade 3

Find the correct time signatures for the rhythms below

	6
	8
	9
	8
	6
	8

Grade 3

Which note should be added in the rectangle to complete the bar?



A musical staff in treble clef with a 12/8 time signature. The staff contains three quarter notes, followed by a red rectangular box, and a bar line.



A musical staff in treble clef with a 12/8 time signature. The staff contains four quarter notes followed by a bar line.

Grade 3

Which note should be added in the rectangle to complete the bar?



A musical staff in treble clef with a key signature of one flat (B-flat) and a 3/4 time signature. The staff contains four measures. The first three measures each contain a quarter note: B-flat, A, and G. The fourth measure is empty, indicated by a red rounded rectangle. A vertical bar line is at the end of the staff.



A musical staff in treble clef with a key signature of one flat (B-flat) and a 3/4 time signature. The staff contains four measures. The first three measures each contain a quarter note: B-flat, A, and G. The fourth measure contains a handwritten quarter note, which appears to be a G. A vertical bar line is at the end of the staff.

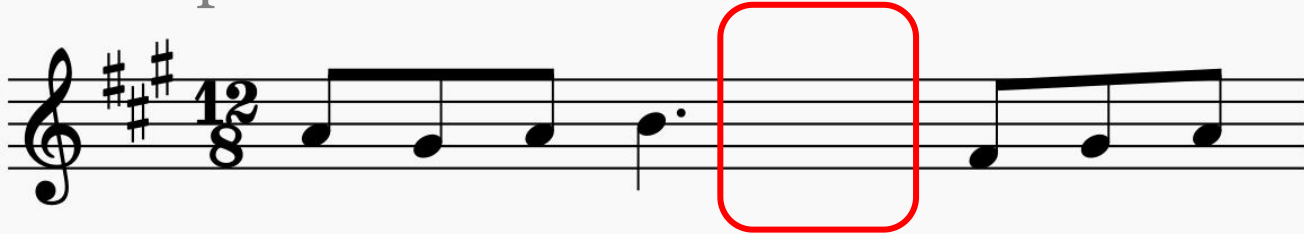
Grade 3

Which note should be added in the rectangle to complete the bar?



Grade 3

Which (one) rest should be added in the rectangle to complete the bar?



A musical staff in treble clef, key signature of three sharps (F#, C#, G#), and 12/8 time signature. The staff contains the following notes: a quarter note G4, a quarter note A4, a quarter note B4, a dotted quarter note C5, a red rounded rectangle, a quarter note D5, a quarter note E5, and a quarter note F5.



A musical staff in treble clef, key signature of three sharps (F#, C#, G#), and 12/8 time signature. The staff contains the following notes: a quarter note G4, a quarter note A4, a quarter note B4, a dotted quarter note C5, a quarter rest, a quarter note D5, a quarter note E5, and a quarter note F5.

Grade 3

Which (one) rest should be added in the rectangle to complete the bar?

A musical staff in treble clef with a key signature of one flat (B-flat) and a 6/8 time signature. The first measure contains a dotted quarter note on G4. The second measure is a red rectangle. The third measure contains a quarter note on A4, a quarter note on B4, a quarter note on C5, and a quarter note on B4. The fourth measure contains a quarter note on A4.

A musical staff in treble clef with a key signature of one flat (B-flat) and a 6/8 time signature. The first measure contains a dotted quarter note on G4. The second measure contains a slash. The third measure contains a quarter note on A4, a quarter note on B4, a quarter note on C5, and a quarter note on B4. The fourth measure contains a quarter note on A4.

Grade 3

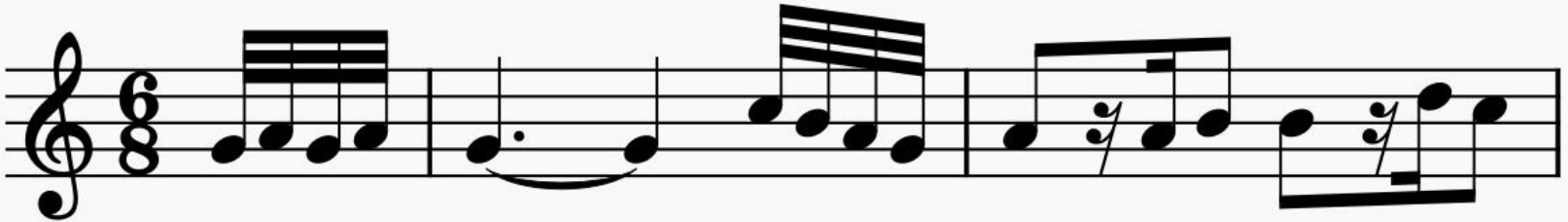
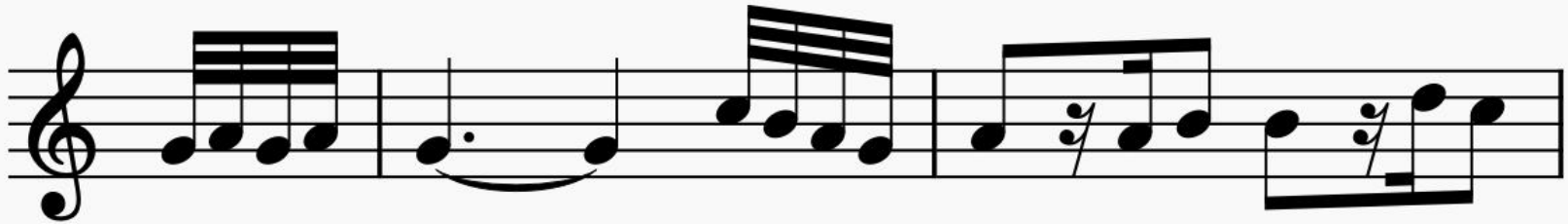
Which (one) rest should be added in the rectangle to complete the bar?

A musical staff in treble clef with a key signature of two sharps (F# and C#) and a 3/8 time signature. The staff contains a dotted quarter note on G4, followed by a red rectangle, then an eighth note on A4, and a beamed eighth-note pair on B4 and C5. The bar line is at the end of the staff.

A musical staff in treble clef with a key signature of two sharps (F# and C#) and a 3/8 time signature. The staff contains a dotted quarter note on G4, a quarter rest, an eighth note on A4, and a beamed eighth-note pair on B4 and C5. The bar line is at the end of the staff.

Grade 3

What is the time signature of the melody below?



Grade 3

What is the time signature of the melody below?



Grade 3

Grouping notes in compound time

In compound time, notes are grouped to show the beats, just like in simple time. The following, however, should be noted:



Beams: Notes are always beamed to make dotted-crotchet beats.
Multiple beats are NOT beamed together

Grade 3

Grouping notes in compound time

In compound time, notes are grouped to show the beats, just like in simple time. The following, however, should be noted:



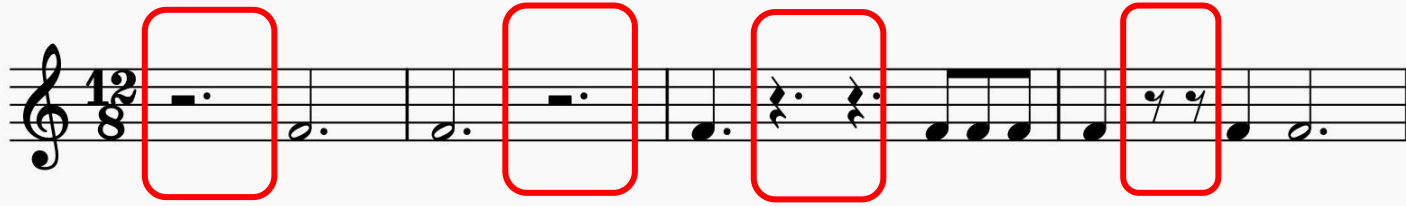
Ties: Ties are used to join notes that **go across different beats**, but **not to join the notes within a beat**

Two full beats are written as a dotted minim.

Grade 3

Grouping rests in compound time

In compound time, each new silent beat is given a new rest, just like in simple time. The following, however, is an exception:



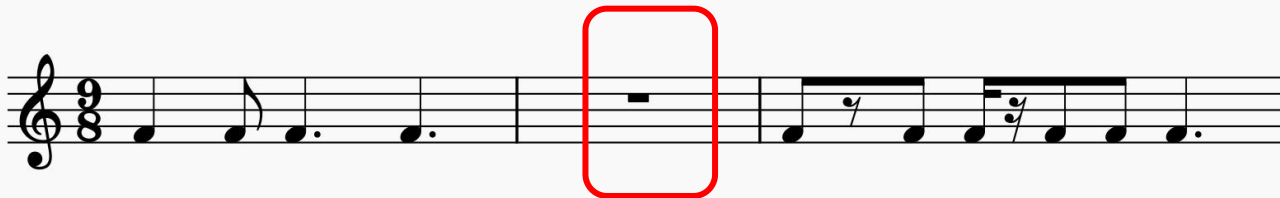
In 12/8, use a dotted minim rest  for the first two or last two beats of the bar, **but not across the middle of the bar**

If two last quavers of a beat are silent, two quaver rests are used.

Grade 3

Grouping rests in compound time

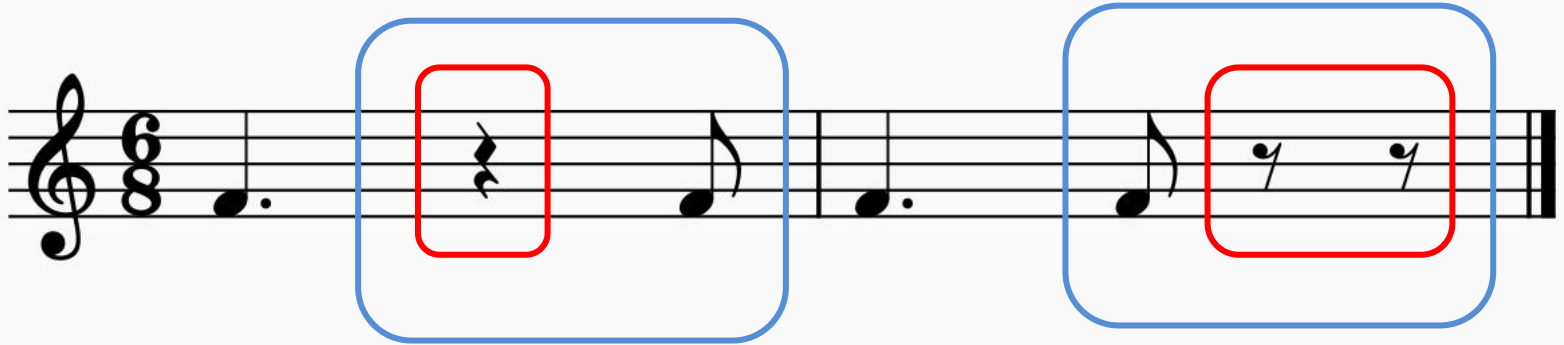
In compound time, each new silent beat is given a new rest, just like in simple time. The following, however, is an exception:



A completely silent bar will use a semibreve rest.

Grade 3

Grouping of rests in compound time

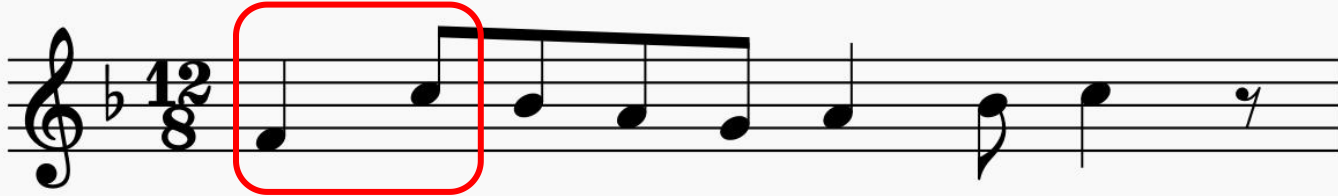


If the first two quavers in a beat are silent, use crotchet rest.

If the second two are silent, use two quaver rests as illustrated above.

Grade 3

Is the following bar grouped correctly?

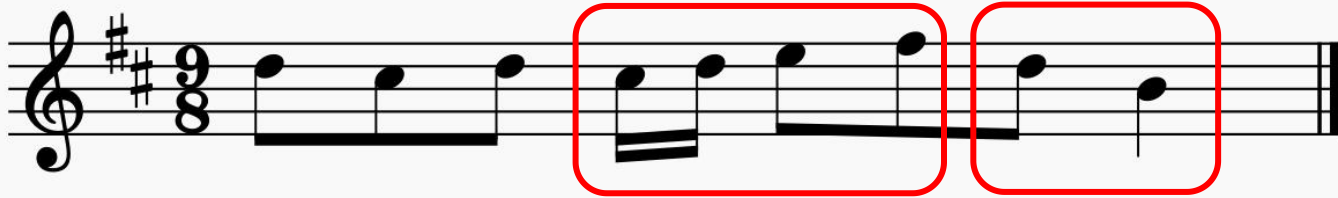


NO. Part of the first beat is grouped with the second beat.

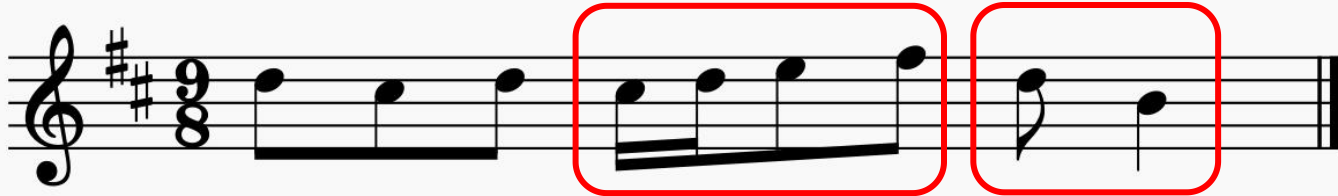


Grade 3

Is the following bar grouped correctly?



NO. The second and third beats are not grouped correctly.



Grade 3

Which bar in the following melody is NOT grouped correctly?



The second bar. When the last two quavers of a dotted-crotchet beat are silent, use two quaver rests instead of crotchet rest:



Grade 3

Is the following bar in simple or compound time? Duple, Triple or quadruple?

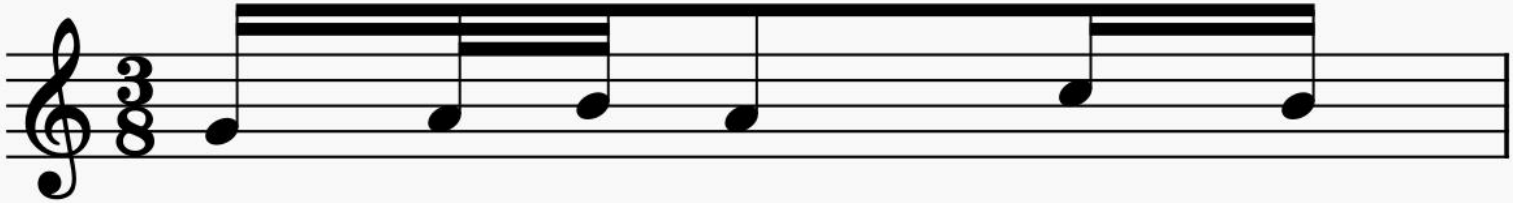


This is in **compound triple time**

It has 3 dotted crotchet beats in a bar

Grade 3

Is the following bar in simple or compound time? Duple, Triple or quadruple?

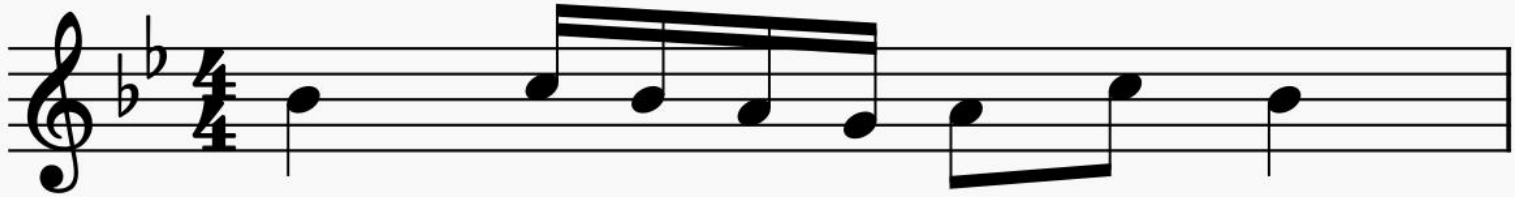


This is in **simple triple time**

It has 3 quaver beats in a bar

Grade 3

Is the following bar in simple or compound time? Duple, Triple or quadruple?








This is in **simple quadruple time**

It has 4 crotchet beats in the bar

Grade 3

Differentiate the grouping in the following 9/8 and 3/4 bars containing the same notes in the bar:

 <p>Beats: 1 2</p>	 <p>Beats: 1 2 3</p>
 <p>Beats: 1 2</p>	 <p>Beats: 1 2 3</p>
 <p>Beats: 1 2</p>	 <p>Beats: 1 2 3</p>

Grade 3

Is the following bar in 3/4 or 6/8?



This is in **3/4**

The grouping is done in crotchet beats, not dotted crotchets.

Remember triplets are done in time of two of the same value.

Grade 3

Is the following bar in 3/4 or 6/8?



This is in **6/8**

The grouping is done in dotted-crotchet beats, not crotchets.



QUALITY IS IN THE HEART
CHEZA MUSIC SCHOOL
OF WHAT WE DO

Thank you, Friends

Quiz: www.chezamusicsschool.co.ke/mtg3l2